

## Science

## LESSON - 2

Month: April

Plants and its parts

I Fill in the blanks:

1. Root fixes the plant firmly in the soil.
2. The stem helps the plant to stand/ upright.
3. Leaf prepares food for the plant by the process called photosynthesis.
4. The main function of a flower is to take part in reproduction.
5. The part of a plant that grows above the soil is shoot.

II Give two examples for the each of the following:

1. Climbers - Grapevine, Bottle gourd
2. Root vegetables - Carrot, Radish
3. Stem vegetables - Potato, Ginger
4. Edible seeds - Wheat, Gram

### III Analogy :

1. Herb : Tulsi ; Shrub : Rose
2. Money plant : Climbers ; Muskmelon : Creeper

### IV Short Answers :

1. Why is the leaf called the Kitchen of the plant ?

Ans \* Leaves prepare food for the plant using sunlight, water and Carbon dioxide.

So, they are called the Kitchen of the plant.

2. What is Germination ?

Ans Germination is the process by which a seed grows into a new plant.

3. Differentiate between Tap root and Fibrous root.

Ans	TAP ROOT	FIBROUS ROOT
i)	A main root grows from the end of the stem. Eg. Balsam, bean	A number of roots grow from the end of the stem. Eg. Grass, wheat

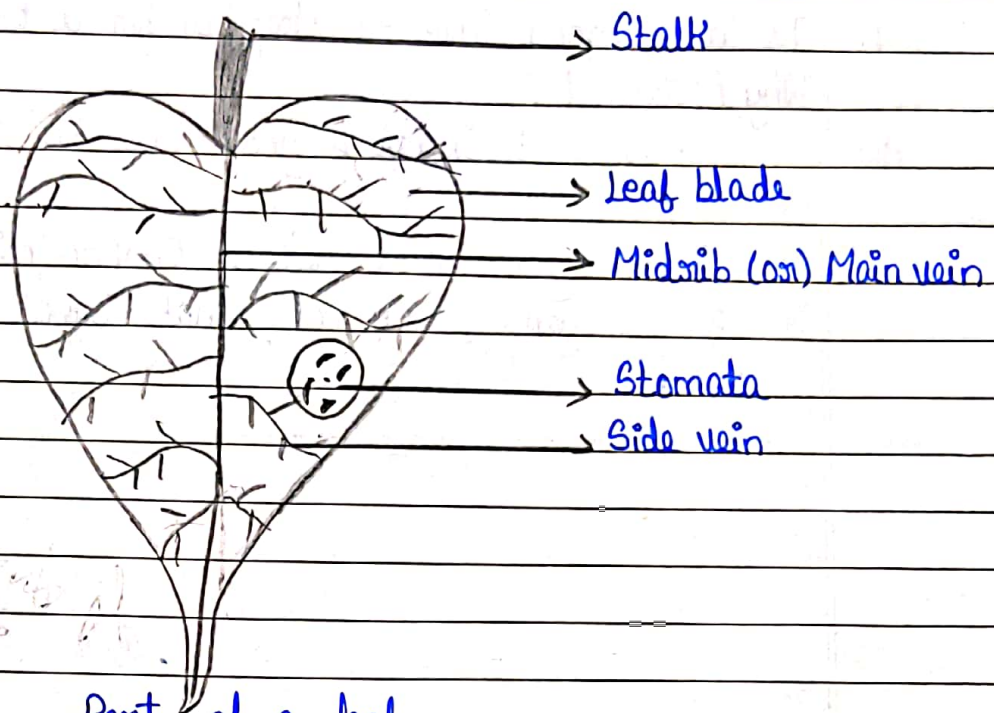
### V Long Answers

1. How do plants breathe in and out ? Explain

Ans Plants breathe through tiny openings called stomata. Stomata are present on the lower surface of the leaf. Plants take in Carbon dioxide from the air. They give out oxygen during the day. This process helps plants to stay alive and grow.



## 2. Draw and explain the parts of a leaf



Parts of a leaf

Stalk (Petiole): It connects the leaf to the stem and supports the leaf.

Midrib or Main vein:

A thick tube that runs through the middle of the leaf.

Side vein:

It has many small thin tube that arise from thick tube.

Leaf blade:

The flat and broad position of the leaf.

Stomata:

There are many tiny pores present on the lower surface of the leaf.

VII Hot

1. Is it a good idea to sleep under a tree at night?  
Why / Why not?

Ans \* No, it is not a good idea to sleep under a tree at night.

\* At night, plants release Carbon dioxide and there is less oxygen, which may make breathing difficult.

*By Anamika  
surya*